

Butler Counseling Center

Counseling Center's
Collection of Helpful Resources



Counselor Contact Information

Phone: (502)485-8220

Grade 9

Mrs. Karin McDevitt

karin.mcdevitt@jefferson.kyschools.us

Link to newsletter: Bear Tales

[Bear Tales](#)



Grade 11

Mrs. Julianne Davis

Julianne.davis@jefferson.kyschools.us

Link to newsletter:

[Butler Tidbits](#)



Grade 10

Mr. Mike Stites

michael.stites@jefferson.kyschools.us

Link to newsletter:

[Mr. Stites's Newsletter](#)



Grade 12

Mrs. Renée Sewell

renee.sewell@jefferson.kyschools.us

Link to newsletter:

NEED LINK



Counseling Office Contact Information

Phone: (502)485-8220

Mrs. Vivian French
Counselors' Clerk

vivian.french@jefferson.kyschools.us



Mrs. Kristi Clark
Enrollment & Records Clerk

kristi.clark@jefferson.kyschools.us



Mrs. Patti Clark
Attendance Clerk

patricia.clark1@jefferson.kyschools.us



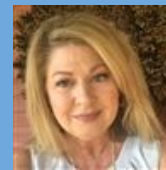
Mrs. Debbie Lewis
Receptionist

debra.lewis@jefferson.kyschools.us



Ms. Kim Johnson
Youth Services Center Coordinator

kimberly.johnson@jefferson.kyschools.us



Support Staff Contact Information

Phone: (502)485-8220

Mrs. Ashlee Derthick
Mental Health Practitioner

ashlee.derthick@jefferson.kyschools.us



Mr. Erik Dandy
Student Support

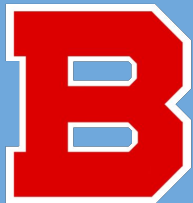
erik.dandy@jefferson.kyschools.us



Mrs. Jennifer Mattingly
School Nurse

jennifer.mattingly@jefferson.kyschools.us





Important Links and Resources

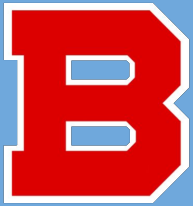
ACT Registration <https://www.act.org/content/act/en.html>

College Board - AP students <https://apstudents.collegeboard.org/>

College Events/Tours NEED LINK

FAFSA - Financial Aid Application <https://studentaid.gov/h/apply-for-aid/fafsa>

Fee Waiver Application <https://www.myschoolapps.com/>



Important Links and Resources

Free/Reduced Lunch Application <https://www.myschoolapps.com/Home/PickDistrict>

Infinite Campus <https://jcpsky.infinitecampus.org/campus/jcps.jsp?status=login>

KEES Account <https://www.kheaa.com/website/kheaa/kees?main=1>

KHEAA <https://www.kheaa.com/website/kheaa/home>

Parchment www.parchment.com



Important Links and Resources

Kentucky Governor's Scholars Program <https://gsp.ky.gov/Pages/index.aspx>

Driver Verification Form email dede.epperson@jefferson.kyschools.us

Alive at 25 www.kentuckysafedriver.com

Immunization/Health Forms email to jennifer.mattingly@jefferson.kyschools.us

Butler NTI 2.0 Page <https://sites.google.com/jefferson.kyschools.us/butler-nti-2-0/home>



Important Links and Resources

Evolve 502 Scholarship <https://evolve502.org>